



Winter 2022
Newsletter





SCHEDULE

DATES:

January 6
January 13
January 20
January 27

TIMES:

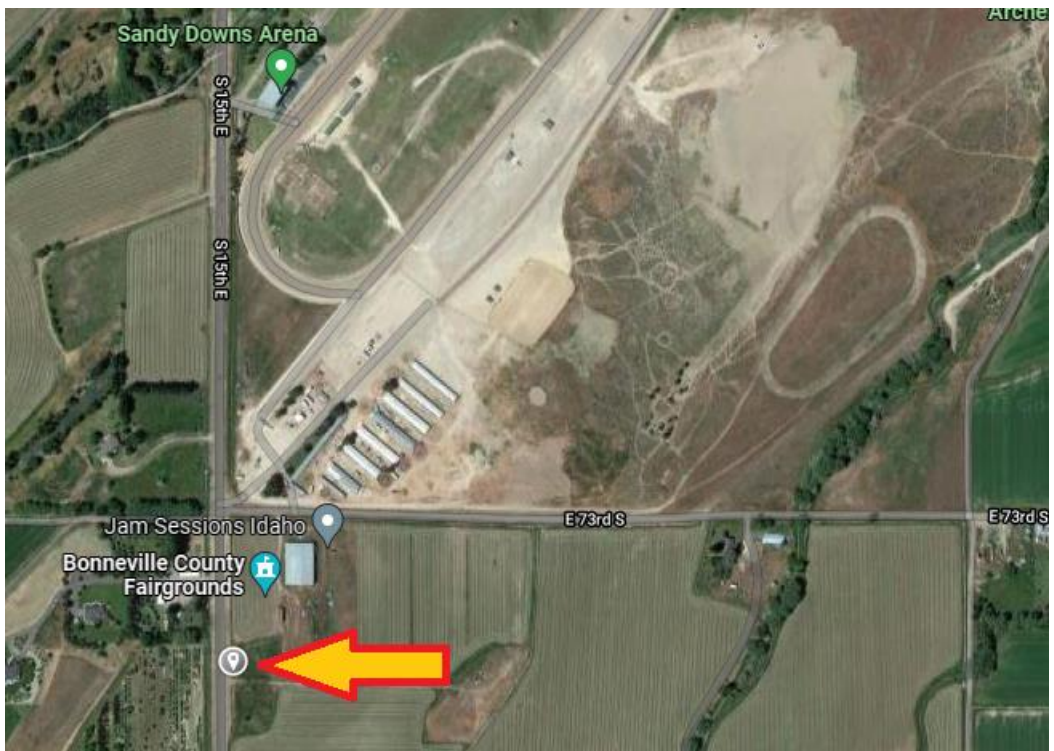
5:00PM (Open Jr.)
6:00PM (Open)
7:00PM (Open Sr.)

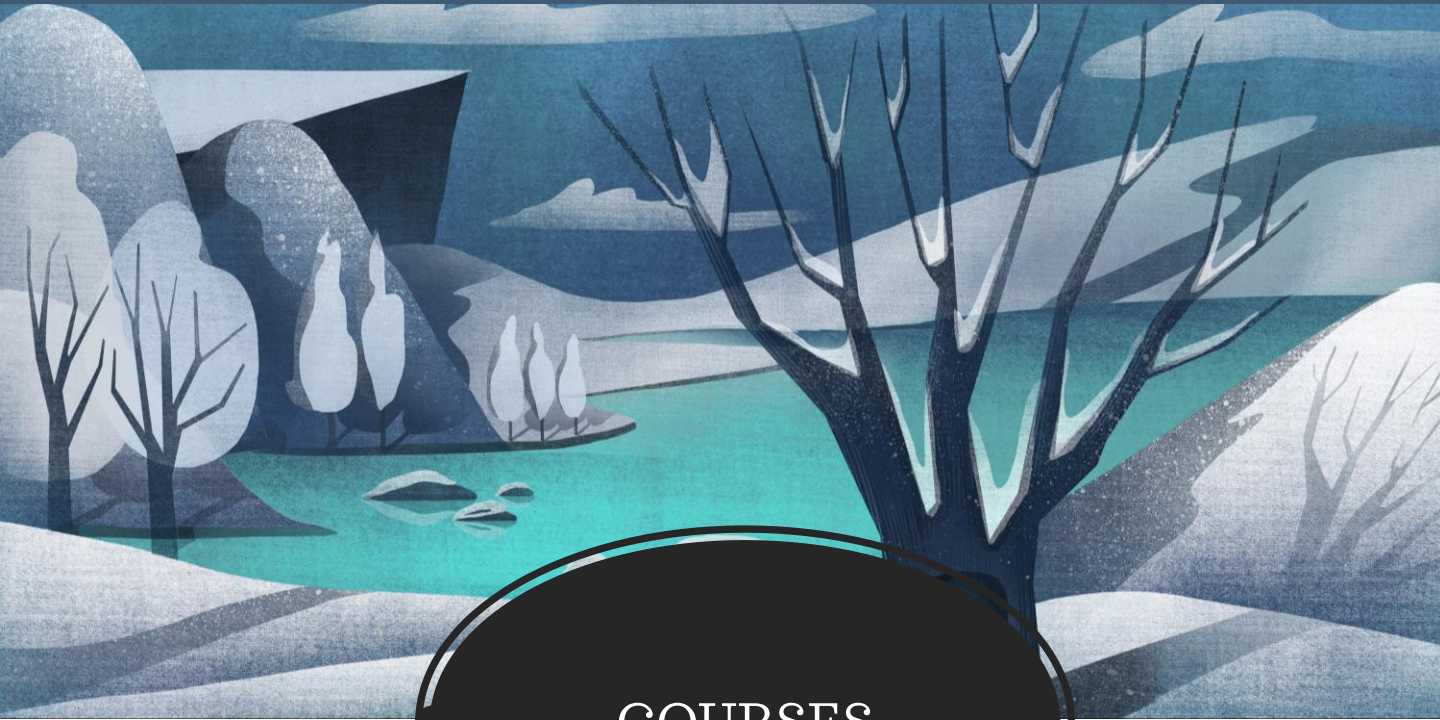
Divisions (Open Jr/Open Sr) are simply recommendations. We recommend that younger kids come at 5:00 and that older kids come at 7:00. However, if you have multiple kids, you can simply come at the time that is most convenient for all of you.



DIRECTIONS

All of the Winter Races will be held at the NEW Bonneville County Fairgrounds Exhibition Hall. This is located South of the Racetrack at Sandy Downs, right on 15th East (Woodruff). The entrance we will be using is on the South side of the building. MAKE SURE TO USE THE SOUTH PARKING LOT!





COURSES

Indoor Space

(We'll pad the floors where the course runs to keep it safe.)



Outdoor Space

(Whenever the weather allows, we'll use the outside space as well.)





OTHER

- All the participants will get:
 - Grit League Shirt
 - 1st Cup
 - Sticker
 - Grit League Bag
 - Pilo (Book)

Plus Each Race:

- Participants can earn another sticker for completing 1 lap.
- The Cup of the Week by completing at least 4 laps.